



Nord Stream 2

Committed. Reliable. Safe.

Facts & Figures

Nord Stream 2 is a natural gas pipeline system through the Baltic Sea and an essential part of European energy infrastructure. By transporting natural gas from the world's largest gas reserves in Russia to the EU's internal gas market, the pipeline helps to meet demand for gas as domestic production declines.

Utilisation of the existing **Nord Stream Pipeline** has increased every year since it opened in 2011. It is now delivering at its full capacity of **55 bcm** per year.

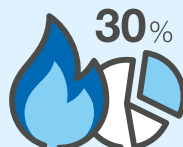
Generating electricity from natural gas produces up to **50 percent less CO₂** than from coal.

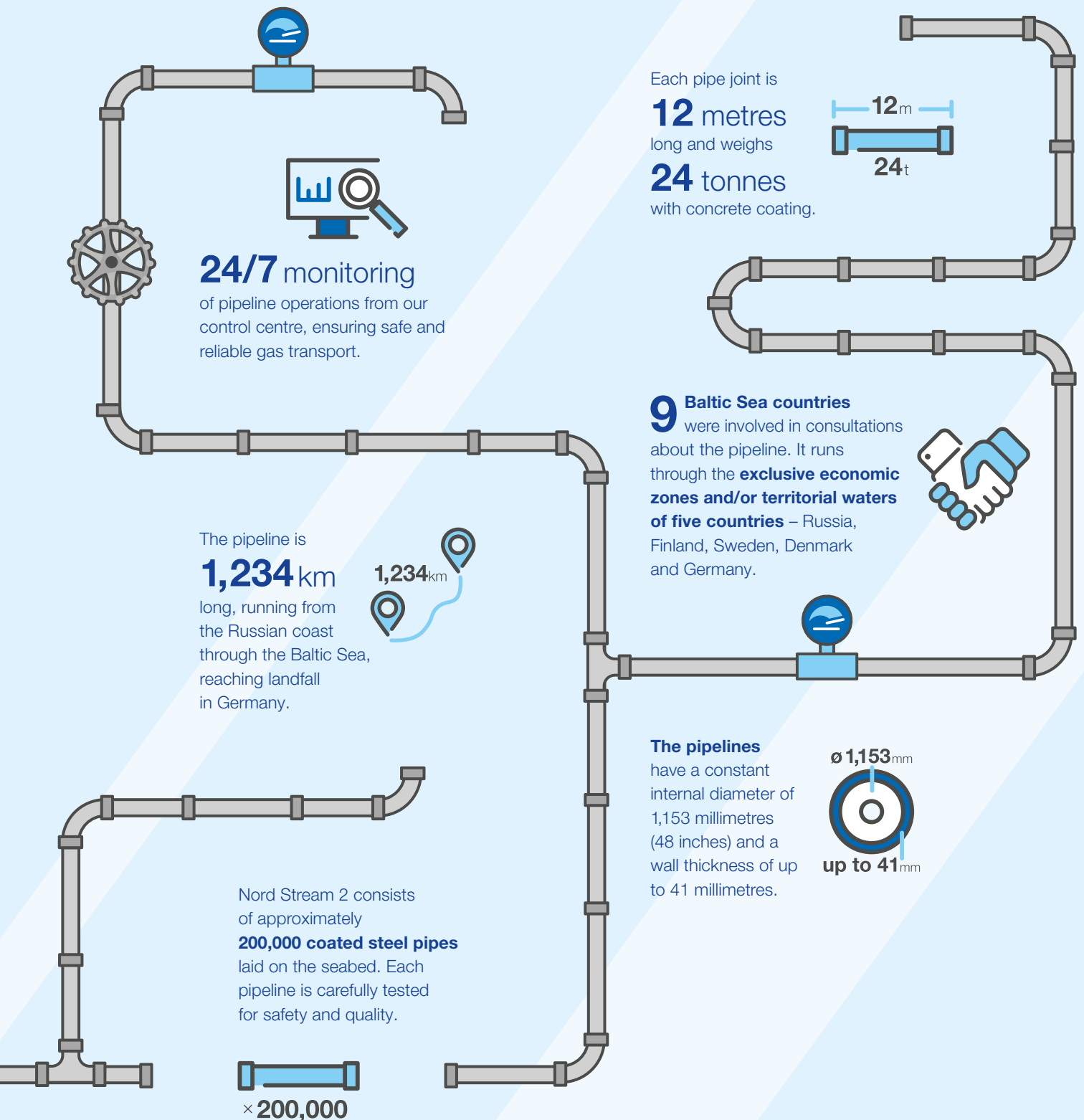
Russian natural gas makes up about **30 percent** of the EU's total energy consumption.

About **120 bcm** of additional imports need to be secured for the EU in the next two decades, owing to decreasing production and lower output from other exporters to Europe.

Nord Stream 2 has the capacity to transport **55 bcm** of natural gas per year, enough to supply some **26 million** European households.

Russia has some **47,800 bcm** of natural gas reserves – the largest natural gas reserves in the world.





Nord Stream 2 AG

Baarerstrasse 52
6300 Zug, Switzerland
T +41 41 414 54 54
F +41 41 414 54 55
info@nord-stream2.com

September 2021

Find us on Social Media:



www.nord-stream2.com