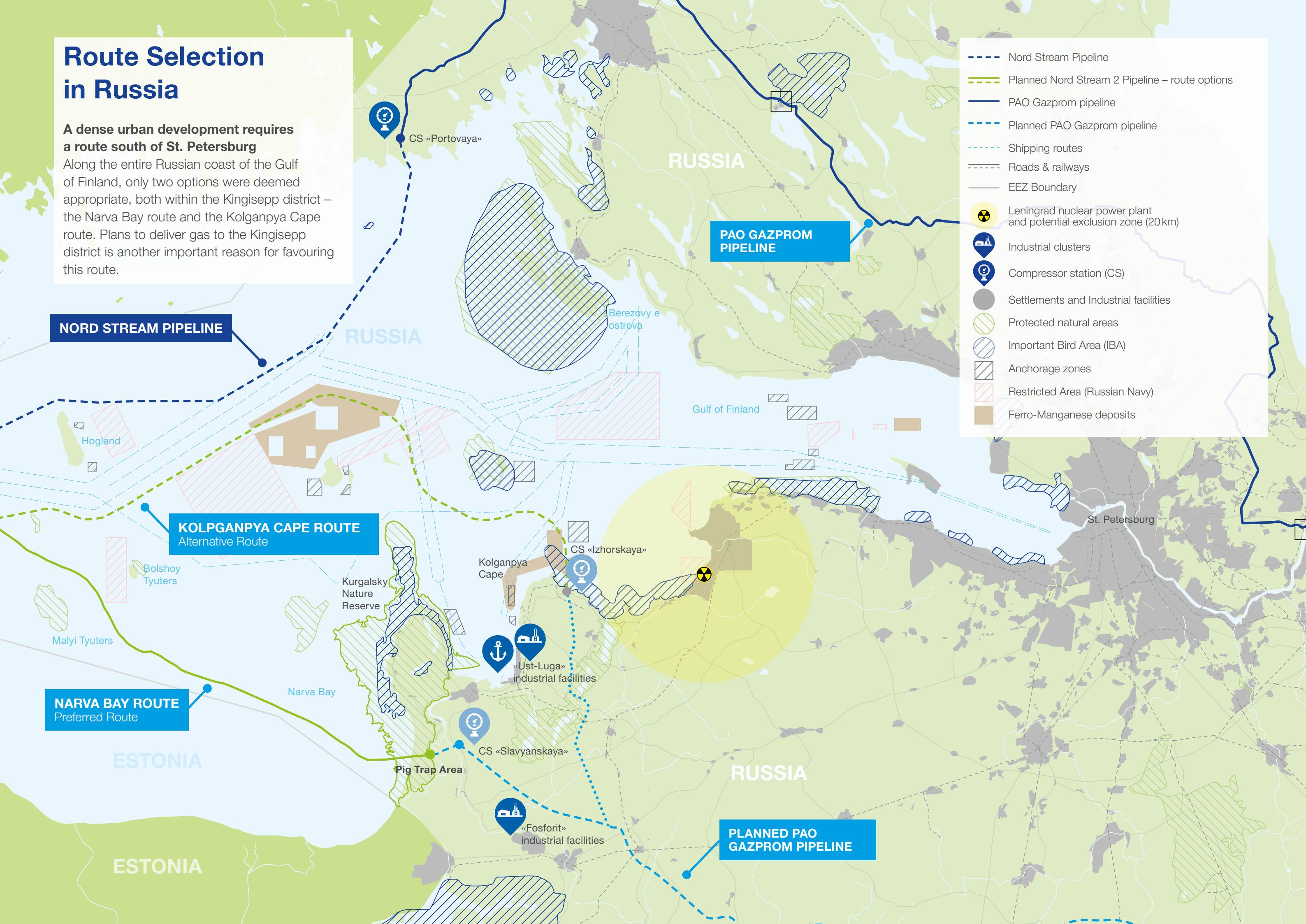


# Route Selection in Russia

**A dense urban development requires a route south of St. Petersburg**

Along the entire Russian coast of the Gulf of Finland, only two options were deemed appropriate, both within the Kingisepp district – the Narva Bay route and the Kolganpya Cape route. Plans to deliver gas to the Kingisepp district is another important reason for favouring this route.



- - - Nord Stream Pipeline
- - - Planned Nord Stream 2 Pipeline – route options
- PAO Gazprom pipeline
- - - Planned PAO Gazprom pipeline
- - - Shipping routes
- - - Roads & railways
- EEZ Boundary
- Leningrad nuclear power plant and potential exclusion zone (20 km)
- Industrial clusters
- Compressor station (CS)
- Settlements and Industrial facilities
- Protected natural areas
- Important Bird Area (IBA)
- Anchorage zones
- Restricted Area (Russian Navy)
- Ferro-Manganese deposits

**NORD STREAM PIPELINE**

**PAO GAZPROM PIPELINE**

**KOLGANPYA CAPE ROUTE**  
Alternative Route

**NARVA BAY ROUTE**  
Preferred Route

**PLANNED PAO GAZPROM PIPELINE**

CS «Portovaya»

Berezovy e ostrova

Gulf of Finland

St. Petersburg

Kolganpya Cape

CS «Izhorskaya»

«Ust-Luga» industrial facilities

Kurgalsky Nature Reserve

CS «Slavyanskaya»

Pig Trap Area

«Fosforit» industrial facilities

Hogland

Bolshoy Tyuters

Malyi Tyuters

Narva Bay

ESTONIA

ESTONIA

RUSSIA

RUSSIA